

SCALE: 1" = 60'

TOPOGRAPHIC SYMBOL LEGEND

00.00BC = BACK OF CURB	00.00GB = GRADE BREAK
00.00BD = BLOW-OFF	00.00GR = GUARD RAIL
00.00BP = BACKFLOW PREVENTER	00.00GS = GAS FLAG
00.00BR = BRICK/PAVERS	00.00HW = HEADWALL
00.00CL = CENTER LINE	00.00IN = INVERT OF PIPE
00.00CE = CONCRETE EDGE	00.00IR = IRRIGATION FLAG
00.00CP = BIKE PATH/CART PATH	00.00MC = MISCELLANEOUS
00.00DC = DITCH CENTER	00.00PH = PHONE FLAG
00.00DD = UNDERDRAIN FLAG	00.00RF = REUSE FLAG
00.00DW = EDGE OF DRIVE	00.00RM = RIM OF MANHOLE
00.00EC = EDGE OF CONCRETE/WALK	00.00SC = SWALE CENTER
00.00EG = EXTRA SHOT	00.00SN = SANITARY FLAG
00.00EL = ELECTRIC FLAG	00.00ST = STORM FLAG
00.00EP = EDGE OF PAVEMENT	00.00SW = EDGE OF CONCRETE/WALK
00.00ES = EDGE OF SHELL/LIMEROCK	00.00TB = TOP OF BANK
00.00EW = EDGE OF WATER	00.00TG = TOP OF GRATE
00.00FB = FENCE, BARB WIRE	00.00TP = TOP OF PIPE
00.00FC = FENCE, CHAIN LINK	00.00TS = TOP OF SLOPE
00.00FM = FORCE MAIN FLAG	00.00TV = CABLE TV FLAG
00.00FO = FIBER OPTIC FLAG	00.00WL = WALL/SEAWALL
00.00FW = FENCE, WOOD	00.00WD = WOOD DECK
00.00FF = FINISH FLOOR	00.00WN = WEIR
00.00FL = FLOW LINE	00.00WS = WATER SURFACE
	00.00WT = WATER FLAG
	00.00 = GROUND ELEVATION

NOTE: 00.0(0) denotes an elevation in feet with the decimal point being the location of the elevation.

LEGEND

PROPOSED HIGH POINT = HP

PROPOSED LOW POINT = LP

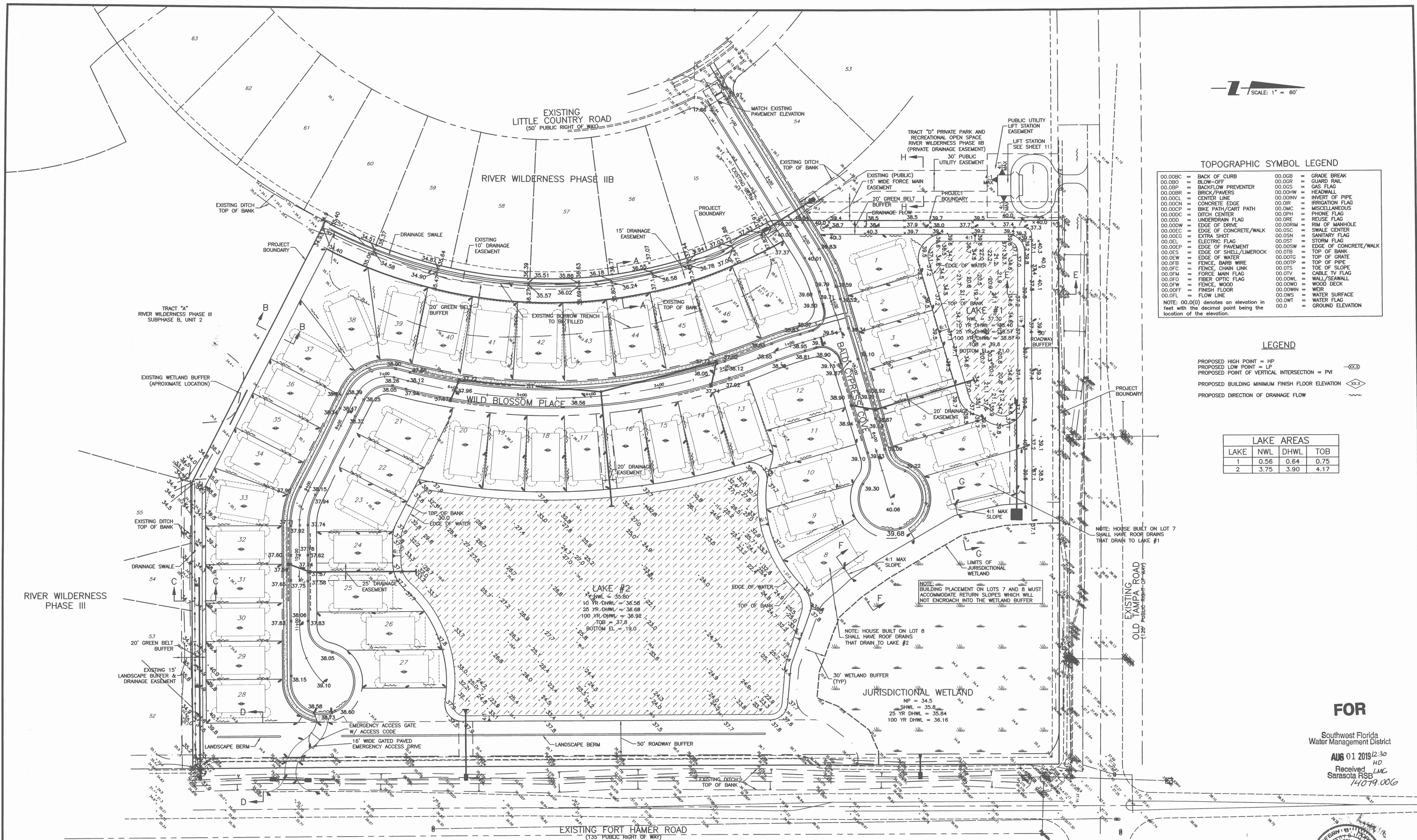
PROPOSED POINT OF VERTICAL INTERSECTION = PVI

PROPOSED BUILDING MINIMUM FINISH FLOOR ELEVATION

PROPOSED DIRECTION OF DRAINAGE FLOW

LAKE AREAS

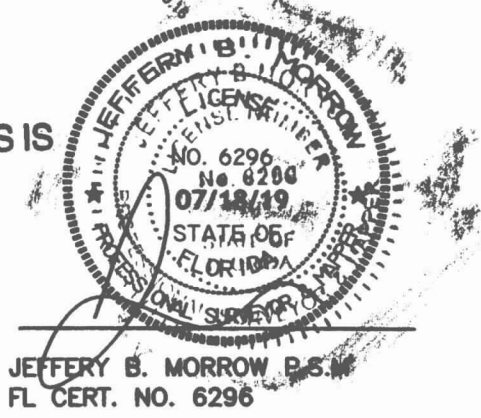
LAKE	NWL	DHWL	TOB
1	0.56	0.64	0.75
2	3.75	3.90	4.17



FOR

Southwest Florida
Water Management District

AUG 01 2019 12:30
HD
Received LMC
Sarasota RSB
14079.006



IMAGED AS IS

CERTIFICATION:
I HEREBY CERTIFY THAT THE AS-BUILT MEASUREMENTS SHOWN HEREON ARE TRUE AND CORRECT TO THE BEST OF MY KNOWLEDGE AND BELIEF AS SURVEYED IN THE FIELD UNDER MY DIRECTION, TOGETHER WITH AS-BUILT MEASUREMENTS FROM MARKERS POSITIONED AND INFORMATION PROVIDED BY CONTRACTOR.
DATE OF LAST FIELD MEASUREMENTS: 03/08/19

REVISION	DATE	BY / EMP. NO.	CHECKED BY / EMP. NO.	WM APPROVED BY:
H	07/18/19	TER		
M	10/17/18	MSC/98616		
Q	8/7/18	MSC/98616		
D	1/9/18	MSC/98616		
C	12/13/17	RPC/116490		
B	11/21/17	MSC/98616		

POINT BREAK SURVEYING, LLC
CERTIFICATE OF AUTHORIZATION LB 0007384

8111 Blakie Ct, Suite E
Sarasota, FL 34240
Office: 941-378-4797
Fax: 941-378-0058

CLIENT:	WEST COAST LAND PARTNERS, LLC	TITLE:	RECORD DRAWING
PROJECT:	RIVER WILDERNESS PHASE IV	INDEX NUMBER:	D-215613985619
DATE:	06/2017	SHEET NUMBER:	4 of 23
SCALE:	1" = 60'	CROSS REFERENCE FILE NO.:	
SEC: TWP: RGE:	5 34S 19E	PROJECT NUMBER:	215613985