

LEGAL DESCRIPTION:
 TRACT NUMBER 7 OF THE PLAT OF RIVER WILDERNESS PHASE I, AS RECORDED IN PLAT BOOK 22, PAGES 80 THRU 94, PUBLIC RECORDS OF MANATEE COUNTY, FLORIDA, CONTAINING 7.72 ACRES MORE OR LESS.

NOTE:
 BUILDING ENVELOPE AS SHOWN HEREON REPRESENTS THE MAXIMUM SPACE THAT WOULD BE OCCUPIED BY A GIVEN BUILDING. BUILDINGS ARE DESIGNED TO BE CONSTRUCTED WITHIN THE BOUNDS OF SAID ENVELOPE.

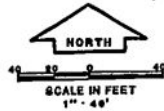
NOTE: ALL IMPROVEMENTS SHOWN HEREON ARE PROPOSED. STRUCTURE DIMENSIONS ARE PRELIMINARY ONLY AND SUBJECT TO CHANGE UPON CONSTRUCTION.

CURVE TABLE			
BELTA	RADIUS	LENGTH	
1	064°52'45"	42.00'	195.65'
1-1	23°02'11"	42.00'	16.89'
1-2	41°58'59"	42.00'	50.07'
1-3	40°52'55"	42.00'	36.31'
1-4	54°58'04"	42.00'	40.27'
1-5	45°44'59"	42.00'	33.35'
1-6	51°42'47"	42.00'	37.96'
2	01°06'44"	15.00'	25.83'
3	13°43'48"	786.00'	189.72'
3-1	05°43'03"	786.00'	78.44'
3-2	03°46'10"	786.00'	70.80'
3-3	03°00'53"	786.00'	61.28'
4	23°19'05"	278.00'	142.25'
4-1	04°42'12"	278.00'	21.15'
4-2	12°21'58"	278.00'	60.00'
4-3	12°25'53"	278.00'	61.12'
5	111°40'53"	25.00'	48.75'
5-1	05°50'12"	51.00'	5.96'
6	58°00'00"	89.00'	90.10'
6-1	58°02'20"	89.00'	87.05'
6-2	01°13'40"	89.00'	4.93'
7	58°00'00"	61.00'	61.75'
7-1	01°11'19"	675.00'	14.00'
7-2	01°11'19"	675.00'	14.00'
8	22°40'12"	69.00'	35.21'
9	88°57'01"	25.00'	36.81'
10	02°21'46"	225.00'	9.18'
11	268°59'40"	42.00'	187.18'
11-1	48°13'18"	42.00'	35.32'
11-2	93°10'54"	42.00'	69.84'
11-3	50°12'47"	42.00'	26.78'
11-4	38°51'46"	42.00'	26.78'
11-5	53°27'55"	42.00'	38.48'
12	88°59'41"	15.00'	23.30'
13	13°40'40"	250.00'	59.68'
13-1	09°19'12"	250.00'	40.67'
13-2	04°21'28"	250.00'	19.01'
14	37°10'03"	250.00'	152.17'
14-1	04°16'28"	250.00'	40.32'
14-2	22°06'53"	250.00'	96.49'
14-3	03°48'42"	250.00'	25.16'
15	18°43'49"	814.00'	254.63'
15-1	02°27'14"	814.00'	54.86'
15-2	04°46'53"	814.00'	67.87'
15-3	04°42'57"	814.00'	61.94'
15-4	04°21'09"	814.00'	61.89'
15-5	02°07'12"	814.00'	50.12'

SKETCH OF DESCRIPTION FOR BROOK RIDGE EXHIBIT "A"
 TO DECLARATION OF RESTRICTIONS AND PROTECTIVE COVENANTS FOR TRACT 7, RIVER WILDERNESS PHASE I IN SECTION 6, TWP. 34S., RGE. 19E. MANATEE COUNTY, FLORIDA (SHEET 1 OF 2)

John P. Supp
 JOHN P. SUPP, P.L.S.
 FLORIDA CERTIFICATE NO. 3783

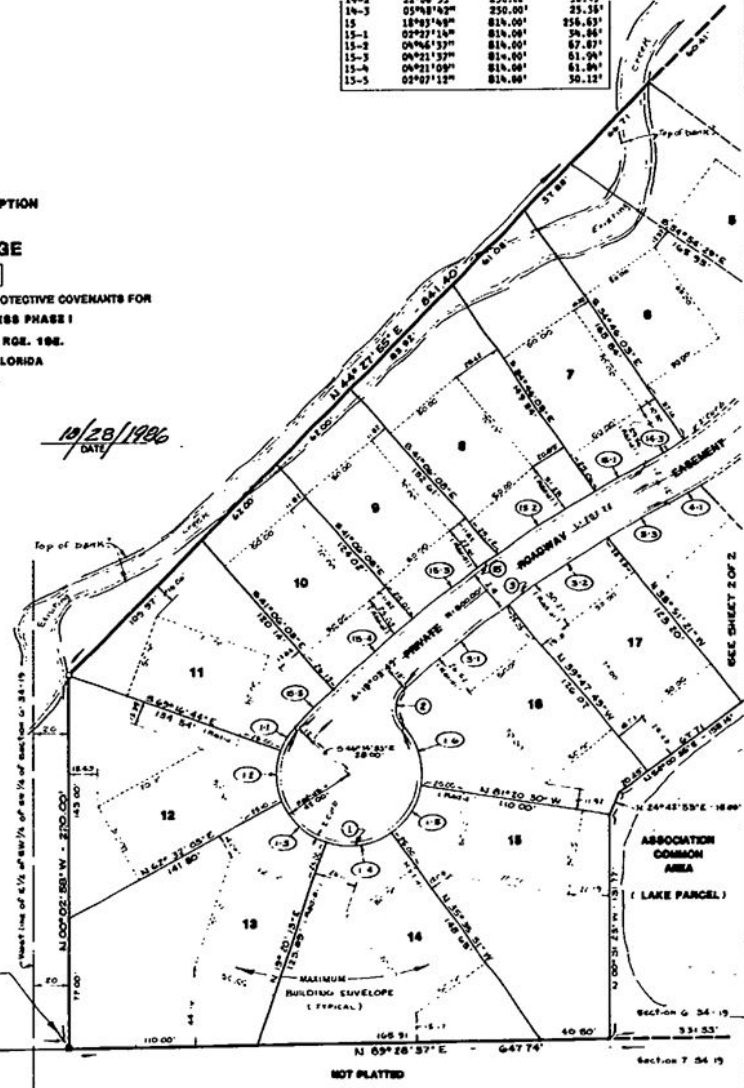
10/23/1996
 DATE



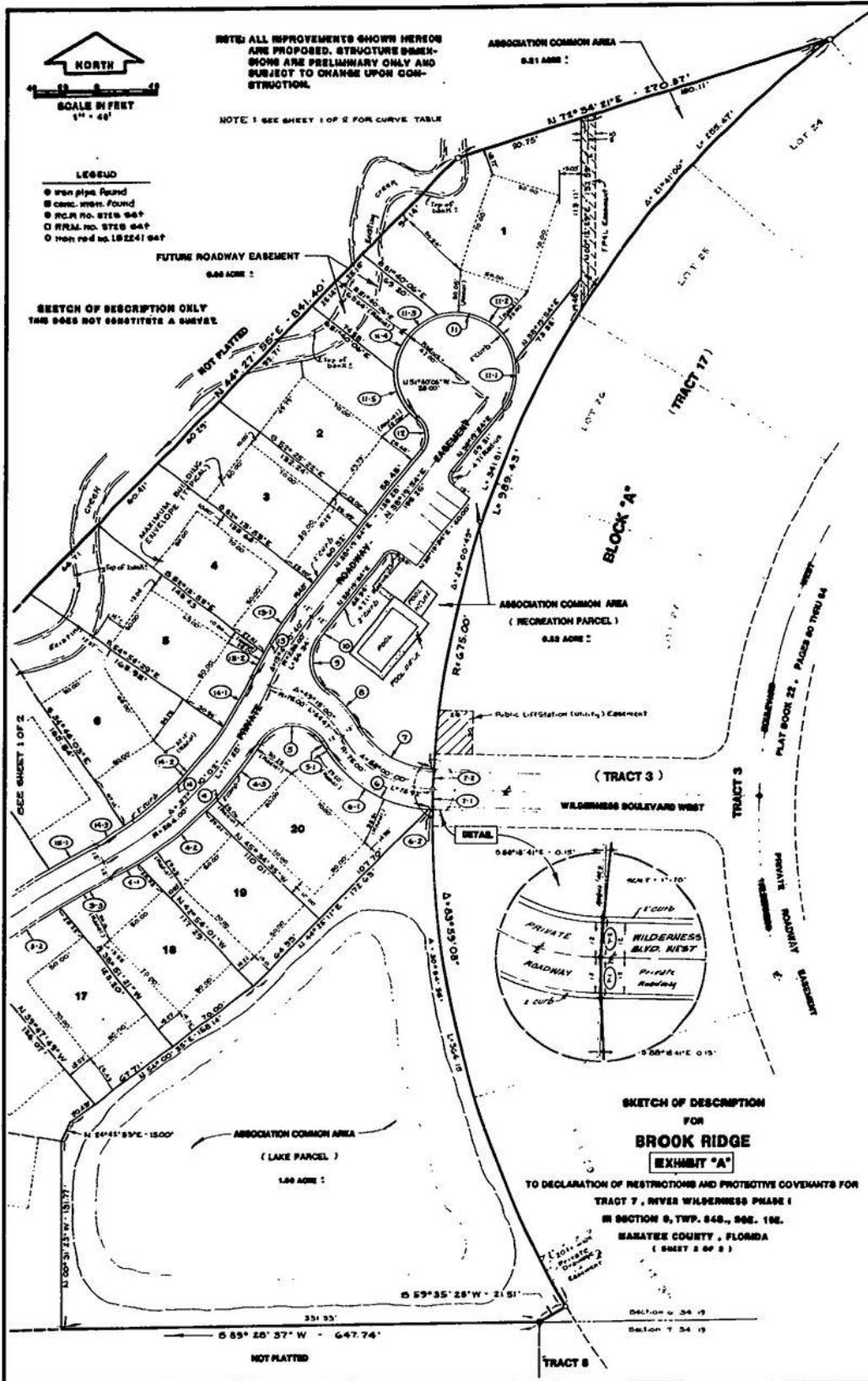
- LEGEND**
- Iron pipe found
 - Conc. mark found
 - ⊙ I.P.C.P. NO. 3785 met
 - P.P.M. NO. 3785 met
 - Iron rod no. 182241 met

SKETCH OF DESCRIPTION ONLY THIS DOES NOT CONSTITUTE A SURVEY

SW CORNER OF TRACT NO. 7 RIVER WILDERNESS PHASE I, Plat Book 22, Pages 80 thru 94



O.R. 1164 PG 2844



O.R. 1164 PG 2845